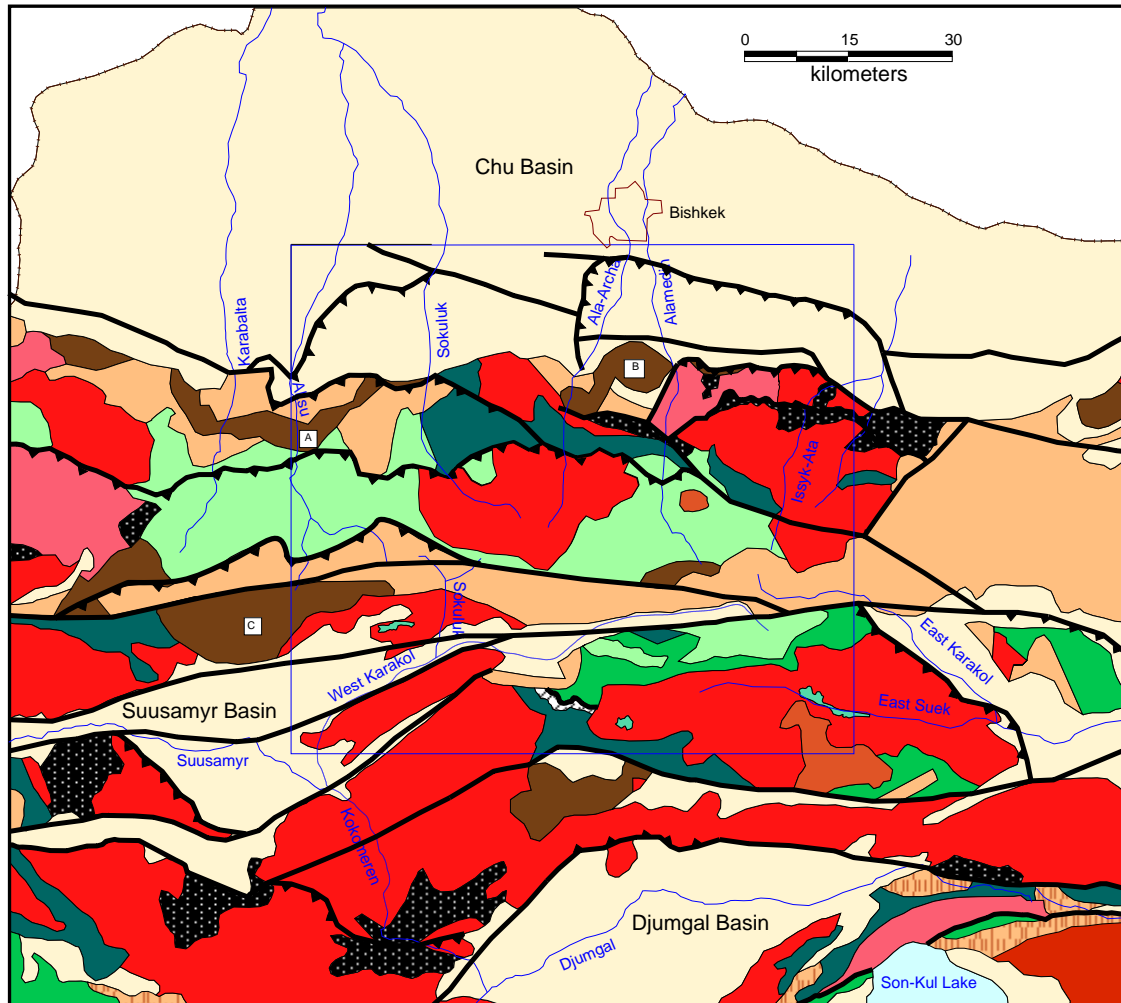


TECTONICS SCHEME OF THE KYRGYZ RANGE AND ADJACENT TERRITORIES



LEGEND

- Cenozoic foreland and intermontane basins
- Late Paleozoic Structural Complex**
- Within-plate alkaline intrusions
- Calc-alkaline intrusions
- Sonkul Basin
- North Tien Shan epicontinental Basin
- Devonian volcanic belt: A - Karabalta, B - Kashkasu, C - Kolbashy troughs
- Late Ordovician - Silurian Structural Complex**
- Calc-alkaline and sub-alkaline intrusions
- Conglomerate and red-bed deposits
- Melange
- Early - Middle Ordovician Structural Complex**
- Sub-alkaline gabbro intrusions
- Flysch, calc-alkaline and sub-alkaline volcanics and volcanoclastic deposits
- Cambrian - Tremadosian Structural Complex**
- Calc-alkaline intrusions
- Ophiolitic series, calc-alkaline volcanics and volcanoclastic deposits
- Proterozoic Structural Complex**
- Metamorphic formations
- Major thrusts and faults
- Boundary of project area.

Compiled by F. Apayarov, A. Mikolaichuk

SNF, Project No 7KSPJ065518; <http://www.kyrgyzstan.ethz.ch>